



# Powerful by nature.

JETI  
**TAURO**  
H3300



Type	Hybrid
Speed	→ → → → →
Width	Up to 330 cm – 130 in
Colors	CMYK   CMYKcK   CCMYKcKc   CMYKcKcmK   Optional white, primer & varnish
Automation	Yes
Upgradable – speed	Yes
Upgradable – colors	Yes

Driven by relentless determination, the rugged Tauro is ready to take on any print job, ensuring you hit the bull's eye 24/7. With its versatile configurations, this sturdy beast unleashes fierce performance, allowing you to experience rugged reliability and charge ahead with primal force.

**AGFA** 

## > A beast for every need

Whatever environment you operate in, whatever your markets or applications, whether seeking high productivity, quality, or versatility, we have the right beast for you. Our inkjet printers are powerful by nature, each with unique strengths built into its design. These beasts will deliver impressive results without compromise, boosting your business.

 $m^2/h$  $\text{ft}^2/\text{h}$ 

**7000**  
75 347

**SpeedSet Orca 1060** | flatbed → → → → → → →

**1500**  
16 146

Onset Grizzly X HS | flatbed → → → → →

**1000**  
10 764

**JETI**  
**TAURO**  
H3300 UHS

**> Unleash fierce performance**



→ → → → →

- > Hybrid
- > Up to 905 m<sup>2</sup>/h - 9741 ft<sup>2</sup>/h
- > Up to 330 cm – 130 in
- > Automatable
- > Speed & colors upgradable
- > CMYK | CMYKcK | CCMYKcK | CMYKcKcmk | Optional W/P/V

700  
7 535

Jeti Condor RTR5200 | roll-to-roll → → → →

**400**  
4 306

**Jeti Tauro H2500** | hybrid → → →

**Jeti Bronco H3300** | hybrid → →

**Avinci CX3200** | roll-to-roll textile → →

**Jeti Mira MG2716/2732** | flatbed → →

**Oberon RTR3300** | roll-to-roll → →

200  
2153

**Anapurna Ciervo H3200** | hybrid → →

**Anapurna** | hybrid printer series →

**Anapurna RTR3200** | roll-to-roll →

**100**  
1 076

**Anapurna FB2540** | flatbed →

printer speed

# > Why Agfa

## Inkjet experts

We are a leading company in imaging technology and IT solutions with over 150 years of experience. We have been developing and manufacturing state-of-the-art inkjet printing systems for over two decades, empowering print service providers to become both more versatile and efficient.

## Best cost of ownership

Inks, print heads, substrates, and color management software are perfectly tuned to each other to guarantee spot-on print quality, reliable production, low consumable usage and limited maintenance. In sum: we guarantee you the best possible cost of ownership.

## One-stop shop

Opt for peace of mind with a complete solution from a single supplier: printer, software, inks, service and support. We even offer attractive financing options.

## Spot-on inks

- > Large color gamut and high vibrancy
- > Low ink consumption thanks to Thin Ink Layer technology
- > Reliable jetting & batch-to-batch consistency
- > Resistant to wear and tear
- > Highly opaque white
- > Primer option for difficult media
- > Compliant with health & environment standards, including GREENGUARD Gold
- > 3M Performance Guarantee for Tauro printers with Anuvia inks



## Asanti workflow & color management

- > Streamlines the printing process from prepress to production
- > Guarantees error-free job handling and consistent color reproduction
- > Parameter-based Calibrated Print Modes enable automatic job creation
- > Production Dashboard offers overview of job status, and ink and media consumption
- > Includes latest Adobe PDF Print Engine

More software options:

- > **Asanti StoreFront**  
cloud-based web-to-print solution
- > **PrintSphere**  
cloud-based file sharing
- > **PrintTune**  
print standardization

## World-class training and support

- > Expert support worldwide minimizes downtime with fast response times and remote troubleshooting capabilities
- > Comprehensive training during setup and production, tailored to your needs
- > Your feedback shapes our partnership

Find your local sales & support team: [www.agfa.com/printing/worldwide](http://www.agfa.com/printing/worldwide)





# > Why the Tauro is the right beast for you

Our fastest hybrid press offers 24/7 productivity and award-winning quality on a wide range of rigid and flexible materials with the lowest ink consumption. With its many automation options, it's the perfect solution for larger print service providers.

- > Versatile printer: tackles nearly all sign & display jobs, as well as packaging
- > Heavy-duty build for 24/7 printing with impressive productivity
- > Award-winning image quality with excellent solid colors and a neutral gray balance
- > Varnish for extra brilliance and impact
- > Several automation options to up your production efficiency when printing long runs or multiple boards
- > Great autonomy gives you peace of mind

## A myriad of applications

The Tauro H3300 range is suited for banners, posters, signage, exhibit graphics, POP, mockups, packaging, backlit, front-lit, self-adhesives, etc. The printers can also be used for niche applications such as wood, art reproductions, glass, or interior decoration.



### Great for cardboard

Thanks to its super-sturdy build, its dynamic extended vacuum zone, advanced automatic loader and smart media guides, the Tauro family is also especially suited for cardboard printing.

### Luxury embellishments

The Tauro H3300 HS and UHS let you add a layer of varnish to your displays to make them shine. The varnish can be applied to the entire surface (flood) or to selected areas (spot).

### Brown packaging boxes

Transition sampling and low- to mid-range packaging print runs to your Tauro. It's perfect for printing brown boxes typically used for secondary or tertiary packaging in e-commerce in one pass.

"With the Jeti Tauro, we will be able to create embellishments and high-end finishes in-house on various media, and in one go. On top of that, it will be at a lower cost and an extreme speed"

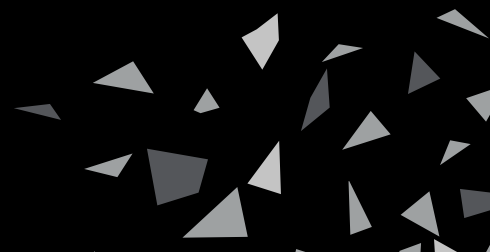
> **Groupe CPV, France**

"When we put the predecessor system of the Tauro H3300 UHS LED into service almost ten years ago, it greatly strengthened our market position. With the new machine, we experience a similar effect. Its performance is impressive, and we can process larger boards now. Also, the hybrid design makes it very flexible."

> **Creaplot, Switzerland**

"I like how Agfa's Tauro H3300 excels at handling corrugated. It is fast at producing almost litho-quality output. Prints are crisp, clear, and smooth."

> **Xpresspack, USA**



# > Tauro H3300 printer models

Tauro H3300 S	Tauro H3300 HS	Tauro H3300 UHS
<ul style="list-style-type: none"> <li>&gt; Up to 450 m<sup>2</sup>/h</li> <li>&gt; 4 rows of print heads</li> <li>&gt; 6 colors</li> <li>&gt; Field upgradable to a 6 row CMYKck configuration</li> <li>&gt; Available options: white, primer</li> </ul>	<ul style="list-style-type: none"> <li>&gt; Up to 680 m<sup>2</sup>/h</li> <li>&gt; 6 rows of print heads</li> <li>&gt; 4 or 6 colors               <ul style="list-style-type: none"> <li>• 2x CMYK: focus on productivity</li> <li>• CMYKck: enhanced image quality</li> <li>• CCMYKck: superior image quality thanks to extra redundancy in dark colors</li> </ul> </li> <li>&gt; Available options: white, primer, varnish</li> </ul>	<ul style="list-style-type: none"> <li>&gt; Up to 905 m<sup>2</sup>/h</li> <li>&gt; 8 rows of print heads</li> <li>&gt; 4, 6 or 7 colors               <ul style="list-style-type: none"> <li>• 2 x CMYK: focus on productivity</li> <li>• CMYKckmk: enhanced image quality with optimal light &amp; mid tone colors</li> <li>• CCMYKck: superior image quality thanks to extra redundancy in dark colors</li> </ul> </li> <li>&gt; Advanced automation to keep up with 1 &amp; 2 pass printing modes</li> <li>&gt; Extended vacuum for cardboard printing</li> <li>&gt; Available options: white, primer, varnish</li> </ul>

## Industry-leading print quality for extremely vivid prints

The Tauro printers deliver a wide color gamut and high color vibrancy. Asanti's color management module allows for accurate mapping of spot colors and neutral gray printing, while precise media transport results in excellent solid color reproduction on a wide variety of media. The 6- & 7-color models include light black, guaranteeing a perfectly neutral gray balance.

The print quality resembles offset printing, with fine details and smoothness throughout. The 7-pl droplets produce stunning images up to 1200 dpi with a fine rendering of shadow and highlight details, and razor-sharp texts in as small as 4-point type, both in positive and negative text. The printers also excel in smooth ramp-ups over the tonal range, with outstanding skin tone rendering.



Great skin tone rendering



HDR

Non-HDR

## A whole new level of brilliance

HDR screenings, available as an option in our Asanti workflow, extend the color gamut and provide better Pantone reproduction without sacrificing speed. This will enable you to achieve your customers' brand colors better without having to slow down your press.





# > Experience rugged reliability

## Tauro H3300 | Full automation

- > Continuous, fully automated board printing up to 3.3 m wide in multiple lanes

### Dynamic vacuum control

The dual-section vacuum system ensures that the printing process runs smoothly and efficiently. Precise dot positioning and accurate media transport are guaranteed. The vacuum gets adjusted automatically, depending on the presence/absence of media, as well as on their size.

The patented extended vacuum zone of the UHS model ensures that print media – including cardboard – lie flat on the table.



### Media guides

Media guides serve as an extra aid to keep warp-prone media flat at all times. They are easy to access and change in view of the required media thickness and width.



### Camera surveillance system

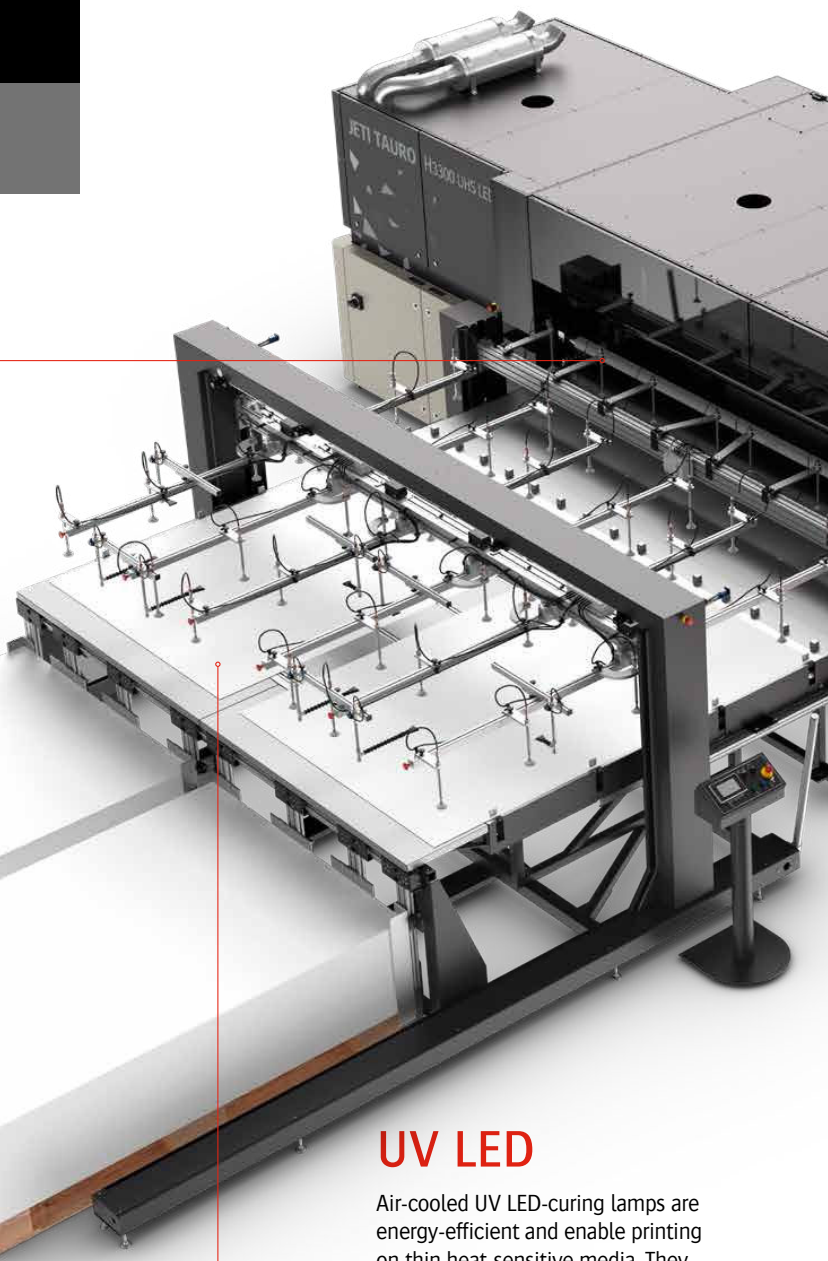
Four optional cameras can record all the printer's moves for easy monitoring.

### UV LED

Air-cooled UV LED-curing lamps are energy-efficient and enable printing on thin heat-sensitive media. They offer major advantages in terms of performance, maintenance, the environment – and overall ROI.

### Pick & place feeder

Boards or sheets are picked up directly from the pallet(s) and placed on the alignment table for vertical and horizontal alignment. Next, they are moved towards the vacuum belt, which ensures a smooth and precise transport into the printing area. The UHS model also has a high-speed feeder with an optional double gantry and is capable of loading media up to 2.65 m. This unique double gantry configuration reassures no drop in productivity in one or two pass printing modes.







## State of-the-art print head shuttle

The print head shuttle is equipped with fast-firing print heads, an anti-electrostatic ionizer bar and safety sensors to prevent collisions. A welded steel beam with aligned rails, an encoder strip, and linear motors allows for highly precise movement and drop positioning.

In the UHS model, the linear motors are even more powerful, while strengthened rails absorb their lateral force. As a result, the larger shuttle moves nearly vibrationless across the beam.

## Pick & place stacker

After printing, the stacker picks up the boards or sheets from the output conveyor and stacks them directly onto the pallet(s).

## Gloss mode

Use the gloss mode for enhanced spot color reproduction without loss of image quality or extra ink usage.



## Intuitive user interface

The intuitive GUI – integrated with Asanti for bi-directional communication – provides a layout preview as well as details about the job status, ink levels, and required maintenance. Managing the printing queue is easy and even last-minute changes are possible. Asanti's **Calibrated Print Modes** let you select predefined 'media recipes', containing all parameter settings for a particular substrate.



## Scissor lift on drip tray

A scissor lift right underneath the printing heads lowers the drip tray for more convenient cleaning.



## Clean and ergonomic ink supply system

Large containers (8 l, and even 20 l for the UHS) allow for long uninterrupted printing and a high autonomy. The RFID tags ensure correct ink supply to the print shuttle, and refilling is easy and can even be done during printing if needed.



## Pedal-controlled

The printing itself, the vacuum table and the roll bars can all be controlled by an easy-to-use pedal.





# > Experience rugged reliability

## UV LED printing

Air-cooled UV LED-curing lamps are energy-efficient and enable printing on thin heat-sensitive media. They offer major advantages in terms of performance, maintenance, the environment – and overall ROI.

## Tauro H3300 | Master roll-to-roll

- > Continuous single- or dual-roll printing of very large rolls

## Single-roll or dual-roll

Single rolls can be up to 3.3 m wide, while in dual printing mode, rolls can be up to 1.6 m wide. Both single and dual rolls can be 600 mm in diameter and weigh up to 700 kg, depending on the roll width. Changing from single to dual-roll printing and vice versa is fast, as is undocking the roll-to-roll system in order to switch to rigid mode.



## Balancing roll system

The balancing roll at the input side regulates the speed of the media unwinding and creates constant tension for wrinkle-free printing in all events.



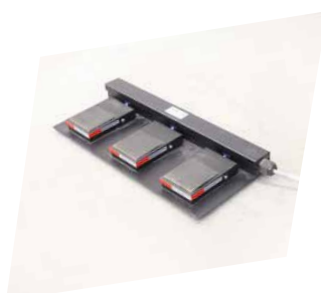
## Gloss mode

Use the gloss mode for enhanced spot color reproduction without loss of image quality or extra ink usage.



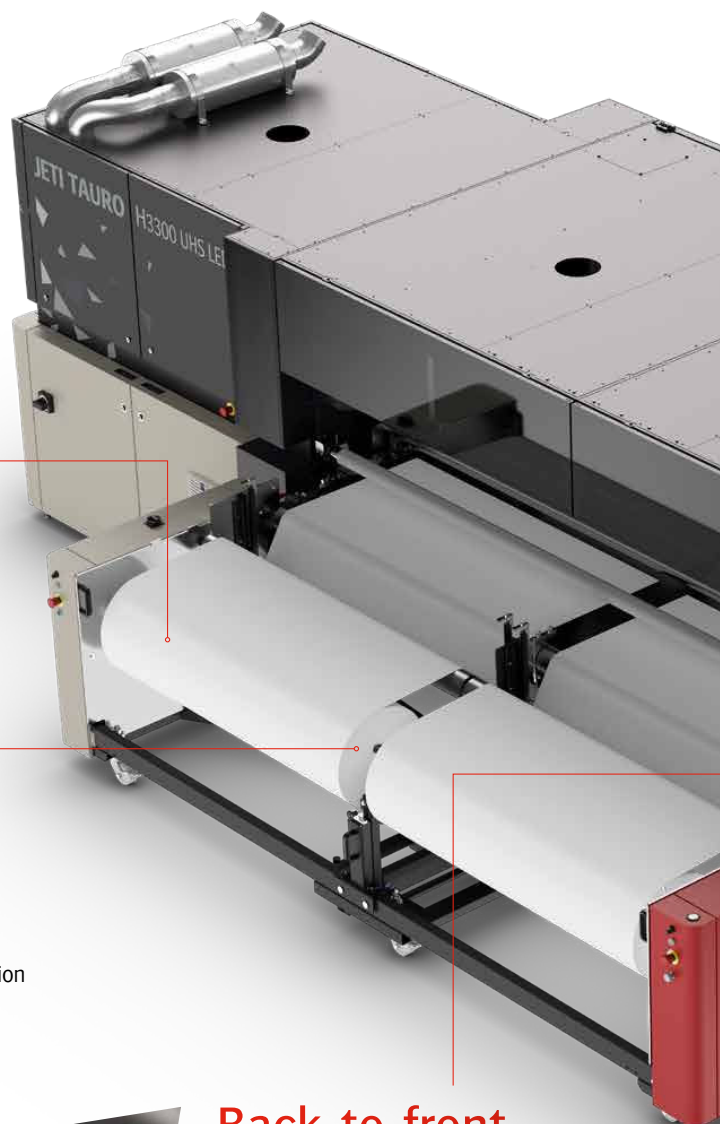
## Back-to-front camera

The optional back-to-front camera facilitates accurate double-sided printing, using QR codes generated by the printer's user interface.



## Pedal-controlled

The printing itself, the vacuum table and the roll bars can all be controlled by an easy-to-use pedal.



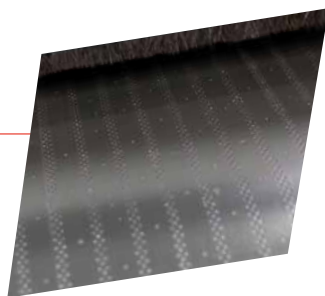




## State of-the-art print head shuttle

The print head shuttle is equipped with fast-firing print heads, an anti-electrostatic ionizer bar and safety sensors to prevent collisions. A welded steel beam with aligned rails, an encoder strip, and linear motors allows for highly precise movement and drop positioning.

In the UHS model, the linear motors are even more powerful, while strengthened rails absorb their lateral force. As a result, the larger shuttle moves nearly vibration-less across the beam.



## Dynamic vacuum control

The dual-section vacuum system guarantees precise dot positioning and accurate media transport. The vacuum gets adjusted automatically, depending on the presence/absence of media, as well as on their size.

The patented extended vacuum zone of the UHS model ensures that print media are kept wrinkle-free.

## Intuitive user interface

The intuitive GUI – integrated with Asanti for bi-directional communication – provides a layout preview as well as details about the job status, ink levels, settings and required maintenance. Managing the printing queue is easy and even last-minute changes are possible. Thanks to the **Calibrated Print Mode** feature, up to ten 'media recipes', containing all parameter settings for a particular substrate, can be selected with one click. For dual-roll printing, the GUI can control a dual queue in order to print both rolls simultaneously.



## Scissor lift on drip tray

A scissor lift right underneath the printing heads lowers the drip tray for more convenient cleaning.



## Clean and ergonomic ink supply system

Large containers allow for long uninterrupted printing and a high autonomy. The RFID tags ensure correct ink supply to the print shuttle, and refilling is easy and can even be done during printing if needed.

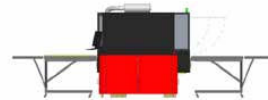


The **light roll-to-roll version** is ideal for occasional, single roll-to-roll work.

# > Loading/unloading configurations

## Rigid materials

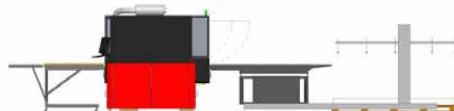
### Manual loading and unloading



- > Input and output tables for single or multiple board printing
- > Perfect for short runs or handling different types of media
- > Optional 3-point alignment bar on the input tables allows for easy and accurate media alignment. This supports more precise double-sided printing of thin media or skewed media, as well as correct cutting, e.g. of cardboard for packaging.
- > Embedded continuous print solution enhances productivity in rigid mode as it narrows down the gap between two consecutive boards

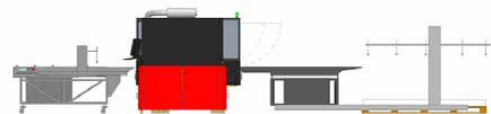
Can be combined with light RTR, flex RTR, master RTR or an automatic board feeder.

### Semi-automation



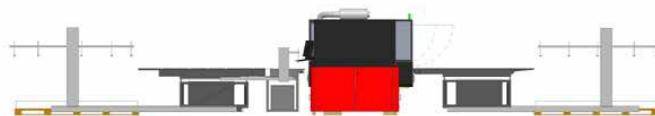
- > Manual loading table, automated stacker
- > Optional 3-point alignment bar on the input tables allows for easy and accurate media alignment. This supports more precise double-sided printing of thin media or skewed media, as well as correct cutting.

### ¾ automation with automatic board feeder (ABF)



- > Manual loading with automatic alignment and transport to the printer
- > Automated stacker
- > Ideal for shorter runs or fast and efficient changeover between different media sizes or types. The ABF takes over part of the operator's tasks, including accurate alignment.

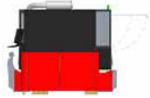
### Full automation



- > Automatic feeder and stacker
- > For larger runs or runs with multiple board stacks
- > Multiple boards automatically, increasing your productivity
- > While one board set is being printed, the next one is being prepared
- > UHS models have an optional second gantry to keep up with the fastest printing modes

## Flexible materials

### Light roll-to-roll



- > For occasional, short single roll-to-roll work
- > Fast switchover between roll-to-roll and sheet mode
- > Maximum weight of 200 kg per roll and a diameter of 250 mm

Can be combined with manual (un)loading tables and the automatic board feeder

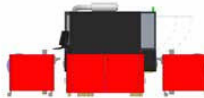
### Flex roll-to-roll



- > Remains docked, thus allowing swift switching between rigid and flexible media
- > For roll-to-roll or roll-to-floor printing
- > Single- or dual-roll printing
- > Compact footprint; ergonomic & user-friendly
- > Handling rolls up to 450 kg with a diameter of 400 mm
- > All onboard concept: no roll switching needed between single- or dual-roll mode

Can be combined with manual (un)loading tables

### Master roll-to-roll



- > Designed to handle very large and heavy rolls
- > For roll-to-roll or roll-to-floor printing
- > Single- or dual-roll printing
- > Handling rolls up to 700 kg with a diameter of 600 mm
- > Dockable system for easy switching between rolls and rigids

Can be combined with manual (un)loading tables and the automatic board feeder

## Flex roll-to-roll system: maximize production efficiency

Benefit from **increased flexibility** with the Flex RTR system. As it doesn't need undocking when transitioning from rolls to boards or sheets – the input and output tables simply attach over the roll system – **printer uptime** is increased.

The Flex RTR can handle both **single- and dual-roll printing** and features an **integrated camera for accurate double-sided printing**.

The module has a **compact footprint** and is **user-friendly**: a single operator can effortlessly load media with the simple push of a button.



## Awards



Tauro H3300 UHS  
UV hybrid/flatbed high-volume production

Tauro H3300 UHS with Master Roll-to-Roll  
& backlit camera  
Automation equipment

Tauro H3300 HS with varnish  
UV/Latex hybrid (more than \$500k)



Tauro H3300 UHS with Flex RTR system  
Automation equipment



# > Charge ahead

## Specifications Tauro H3300 series

MODELS	TAURO H3300 S	TAURO H3300 HS	TAURO H3300 UHS
	Tauro H3300 S 6 colors (24 heads) Options: - Full white (+ 8 heads) - Primer + white (+ 8 heads)  The Tauro H3300 S is upgradable to a Tauro H3300 HS – 6 colors (36 heads) configuration	Tauro H3300 HS – 6 colors (36 heads) Tauro H3300 HS – 6 colors+ (48 heads) Tauro H3300 HS – 2 x 4 colors (48 heads) Options: - Full White (+ 12 heads) - Primer + white (+ 12 heads) - Varnish (+ 4 heads) - White + varnish (+ 10 heads)	Tauro H3300 UHS – 6 colors+ (64 heads) Tauro H3300 UHS – 7 colors (64 heads) Tauro H3300 UHS – 2x 4 colors (64 heads) Options: - Full white (+ 16 heads) - Primer + white (+ 16 heads) - Varnish (+ 4 heads) - White + varnish (+ 12 heads)
PRODUCTIVITY	Up to 450 m <sup>2</sup> /h (4844 ft <sup>2</sup> /h)		
MEDIA & PRINTING SPECIFICATIONS – SHEETS & BOARDS	Up to 680 m <sup>2</sup> /h (7319 ft <sup>2</sup> /h)		
Maximum width	Base engine: 3.34 m (131.49 in = 10.95 ft) Feeder, stacker and ABF: 3.30 m (130 in = 10.8 ft)		
Maximum length	Base engine: 4.0 m (157.48 in = 13.12 ft) Feeder: boards & flexible sheets: 2.65 m (104.33 in = 8.69 ft) Stacker: boards & flexible sheets: 2.65 m (104.33 in = 8.69 ft) ABF: combined with input & output tables: 4.0 m (157.48 in = 13.12 ft) / / combined with stacker: 2.65m (104.33 in = 8.69 ft) for boards and flexible sheets		
Minimum size	Base engine: A2: 42.0 cm x 59.4 cm (16.5 in x 23.4 in) Feeder, stacker and ABF: A1: 59.4 cm x 84.1 cm (23.4 in x 33.1 in) (in portrait)		
Thickness	Base engine: min. 0.2 mm (8 mil) - max. 5 cm (2 in) media-dependent Feeder, stacker and ABF: min. 0.2 mm (8 mil) - max. 2 cm (0.8 in), media-dependent		
Weight	Base engine: 10 kg/m <sup>2</sup> (2 lb/ft <sup>2</sup> ) evenly distributed – Sheets: from 200 g/m <sup>2</sup> (0.04 lb/ft <sup>2</sup> ) Feeder, stacker and ABF: 10 kg/m <sup>2</sup> (2 lb/ft <sup>2</sup> ) with max. 25 kg (55.1 lb) per load cycle – Sheets: from 200 g/m <sup>2</sup> (0.04 lb/ft <sup>2</sup> )		
Borderless printing	Yes, with protection paper or tape on the belt		
MEDIA & PRINTING SPECIFICATIONS – ROLL-TO-ROLL			
Maximum width	Light roll-to-roll: Single roll: 3.2 m (126 in = 10.5 ft) Flex roll-to-roll: Single roll: 3.3 m (130 in = 10.83 ft) / Dual roll: 1.6 m (63 in = 5.25 ft) Master roll-to-roll: Single roll: 3.3 m (130 in = 10.83 ft) / Dual roll: 1.6 m (63 in = 5.25 ft)		
Minimum width	Light roll-to-roll: Single roll: 61 cm (24 in = 2 ft) Flex roll-to-roll: Single & dual roll: 61 cm (24 in = 2 ft) Master roll-to-roll: Single & dual roll: 61 cm (24 in = 2 ft)		
Maximum length	Full roll length (depends on total roll thickness, diameter and weight)		
Thickness	Light roll-to-roll: Single roll: max. 2 mm (0.08 in) (80 mil) – min. 0.2 mm (0.008 in) (8 mil) Flex roll-to-roll: Single & dual roll: max: 2 mm (0.08 in) (80 mil) – min: 0.2 mm (0.008 in) (8 mil) Master roll-to-roll: Single & dual roll: max: 2 mm (0.08 in) (80 mil) – min: 0.2 mm (0.008 in) (8 mil)		
Maximum weight	Light roll-to-roll: Single roll: up to 200 kg (440.92 lb) per roll in full width*, mounted at the center of the shaft Flex roll-to-roll: Single roll: up to 450 kg (992.08 lb) in full width*, mounted at the center of the shaft Dual roll: up to 450 kg (992.08 lb) per roll* (each roll centered on its shaft) Master roll-to-roll: Single roll: up to 700 kg (1543.24 lb) in full width*, mounted at the center of the shaft Dual roll: up to 700 kg (1543.24 lb) per roll* (each roll centered on its shaft) * The maximum weight depends on the roll width.		
Max. roll outside diameter	Light roll-to-roll: 250 mm (9.8 in) Flex roll-to-roll: Single & dual roll: 400 mm (15.7 in) Master roll-to-roll: Single & dual roll: 600 mm (23.6 in)		
Roll mounting	Pneumatic shafts for cores of 76.2 mm (3 in) (standard), and 152.4 mm (6 in) (optional)		
Borderless printing flexible media	Yes, with tape on the belt		
MEDIA			
Media types	Rigid as well as flexible media. Check with your local Agfa representative for a detailed list.		
PRINT HEADS & INKS			
Print heads	Piezoelectric Ricoh MH5420		
Ink	Anuvia CMYKck + white and primer	Anuvia CMYKck + white, primer and varnish	Anuvia CMYKcmk + white, primer and varnish
IMAGE & TEXT QUALITY			
Image quality	Resolution up to 1200 dpi		
Text quality	4 point		
ROOM CONDITIONS			
Temperature	16-25°C (61-77°F)		
Relative humidity	40-60%		
SYSTEM INTEGRATION RIP/WORKFLOW SOFTWARE			
	Asanti, StoreFront, PrintSphere, third-party RIPs		

> Get a demo or print sample pack!

